



# GLOBAL PRECISION INDUSTRIES

**MITA**  
**February 9, 2021**

**Global Precision Industries, Inc. designs and manufactures high-quality, large-scale tooling (molds, mold bases, dies, components) and large quantity production items.**



**Our on-the-ground presence in Asia** and our international experience assures the best results in the shortest possible time.

**Domestic Engineering, Prototyping and Logistics Hub**



**GLOBAL  
PRECISION**

WORLDWIDE ENGINEERED SOLUTIONS

BRILLIANCE

Without Borders

GLOBAL  
PRECISION

WORLDWIDE ENGINEERED SOLUTIONS

**Rockwell**  
**Automation**

**SC Johnson**

**Huf**

 **PENTAIR**

 **STRATTEC™**

**Milwaukee®**

**Empire®**

 **ERCURY**

 **JOHN DEERE**

**Aptargroup**

 **MillerCoors™**

**GAUTHIER**  
BIOMEDICAL 

**CNH**  
INDUSTRIAL

 **BRIGGS & STRATTON**

**inpro®**

**RYOBI**

**REXNORD**

**FOXCONN**

 **GENERAC®**

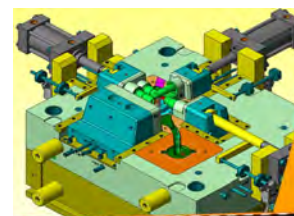


**Your single source for innovative design, reliable engineering, high-quality tooling, dependable production and trusted inspection solutions**



PRODUCT  
DEVELOPMENT

**GLOBAL  
PRECISION  
INDUSTRIES**  
WORLDWIDE ENGINEERED SOLUTIONS



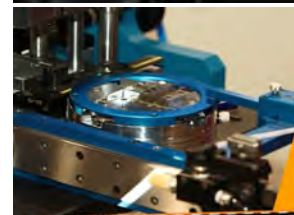
ENGINEERING

**GLOBAL  
PRECISION  
INDUSTRIES**  
WORLDWIDE ENGINEERED SOLUTIONS



PRODUCTION

**GLOBAL  
PRECISION  
INDUSTRIES**  
WORLDWIDE ENGINEERED SOLUTIONS



RESEARCH

**GLOBAL  
PRECISION  
INDUSTRIES**  
WORLDWIDE ENGINEERED SOLUTIONS



SPECIALTY  
MACHINING

**GLOBAL  
PRECISION  
INDUSTRIES**  
WORLDWIDE ENGINEERED SOLUTIONS



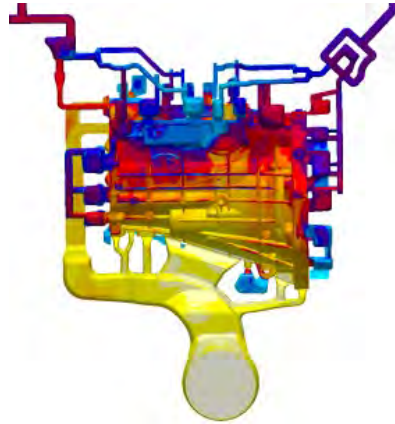
LOGISTICS

**GLOBAL  
PRECISION  
INDUSTRIES**  
WORLDWIDE ENGINEERED SOLUTIONS

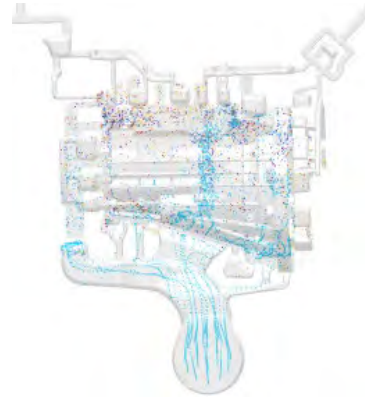
**GLOBAL  
PRECISION**

WORLDWIDE ENGINEERED SOLUTIONS

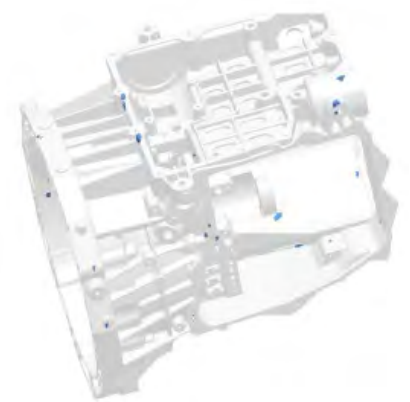
# Complete, Domestic Design and Engineering



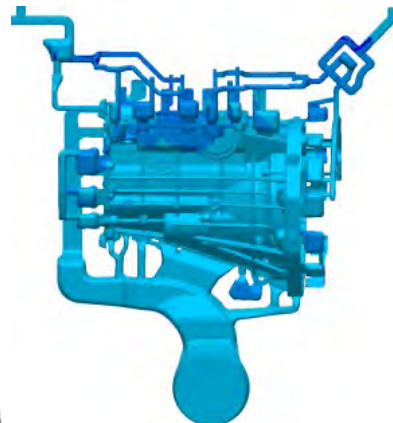
Filling Temperature



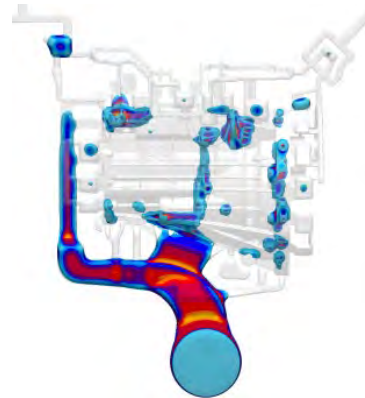
Flow Tracer



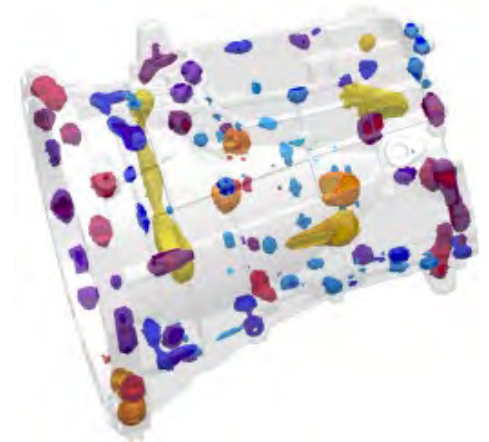
Porosity



Air Entrapment



Solid Temperature



Hot Spot





Custom Engineered Tooling

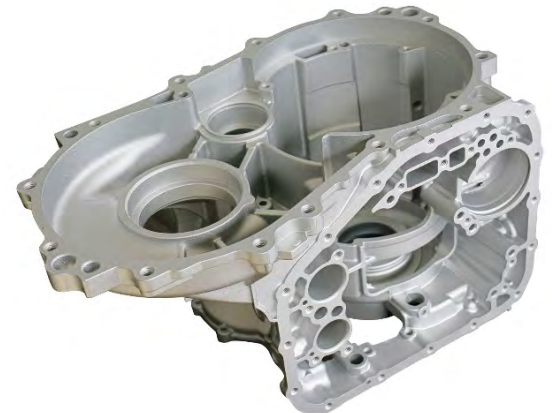
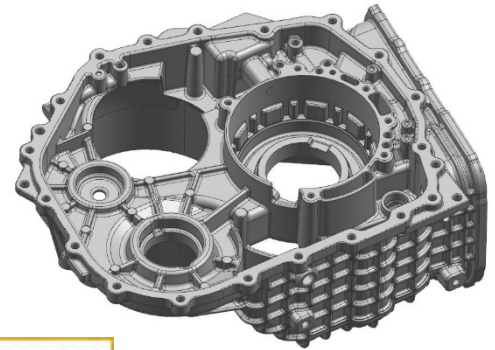
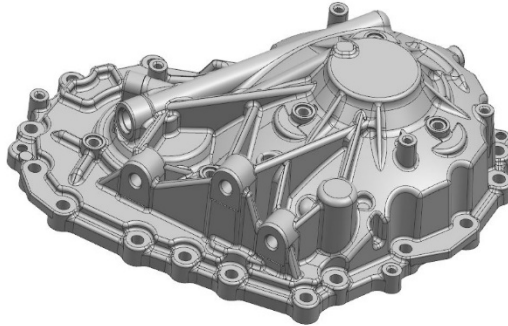


GLOBAL PRECISION  
WORLDWIDE ENGINEERED SOLUTIONS

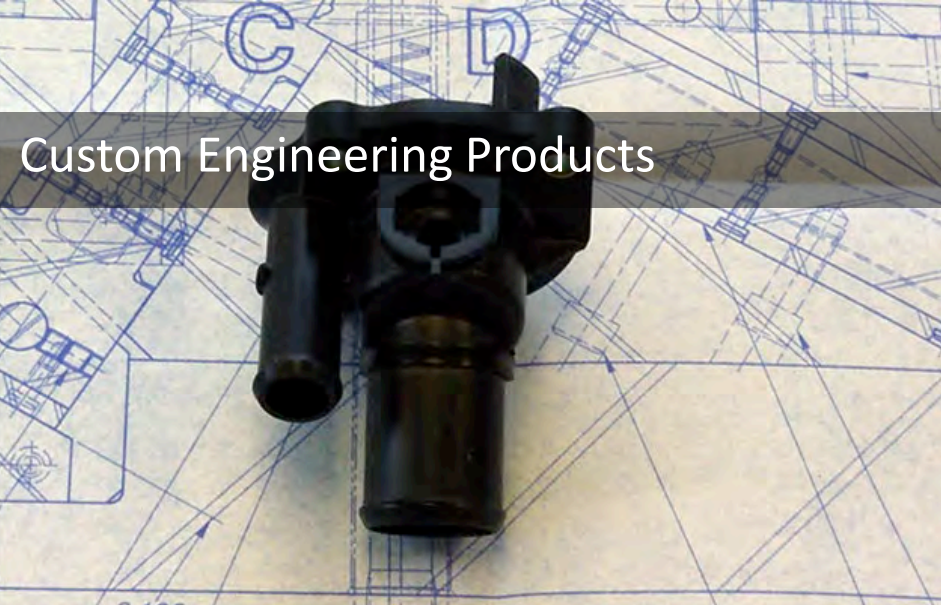




# Sample Parts



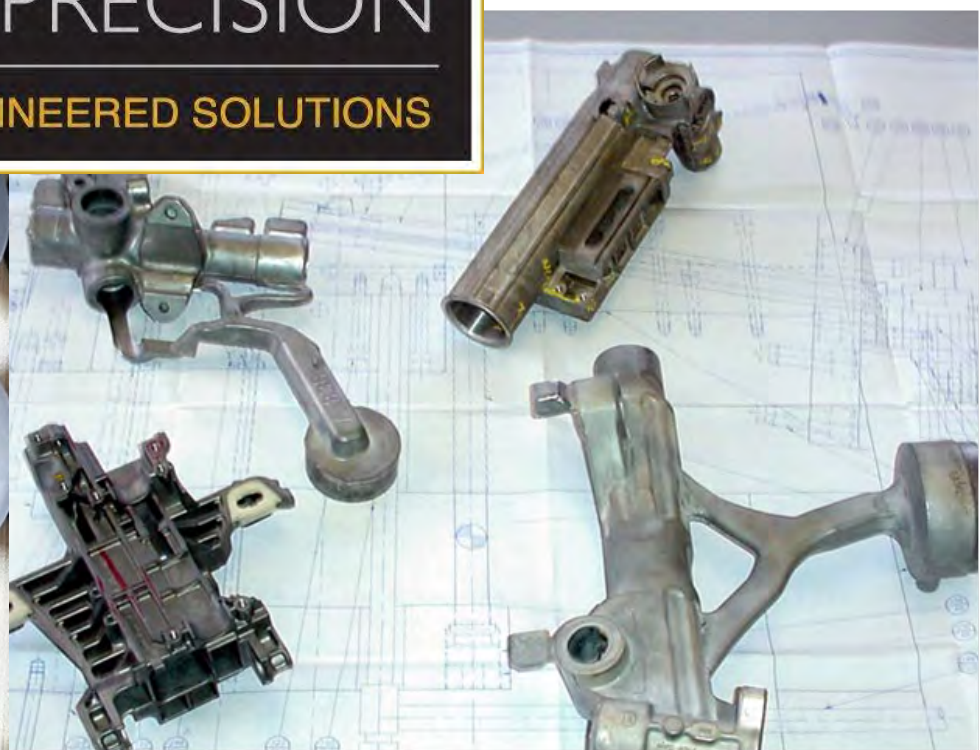




Custom Engineering Products



GLOBAL PRECISION  
WORLDWIDE ENGINEERED SOLUTIONS







Extensive Machine Capacity



GLOBAL PRECISION  
WORLDWIDE ENGINEERED SOLUTIONS



**BRILLIANCE**  
Without Borders

# Complete Inspection Capabilities



**GLOBAL  
PRECISION**

WORLDWIDE ENGINEERED SOLUTIONS

**DIVERSIFIED**  
DESIGN | MANUFACTURING INC



# The Global Precision Difference



# Ensuring a Secure Supply Chain

C-TPAT is one layer in U.S. Customs and Border Protection's (CBP) multi-layered cargo enforcement strategy.

Through this program, CBP works with the trade community to strengthen international supply chains and improve United States border security.

Global Precision retains a multi-year certification and Level 2 status





# C-TPAT Benefits

- **Front of the line inspections**
- **Shorter wait times at the border**
- **Access to the Free and Secure Trade (FAST) Lanes at the land borders**
- Reduced number of CBP examinations
- Possible exemption from Stratified Exams
- Assignment of a Supply Chain Security Specialist to the company
- Access to the CTPAT web-based Portal system and a library of training materials
- Possibility of enjoying additional benefits by being recognized as a trusted trade Partner by foreign Customs administrations that have signed Mutual Recognition with the United States
- Eligibility for other U.S. Government pilot programs, such as the Food and Drug Administration's Secure Supply Chain program
- Business resumption priority following a natural disaster or terrorist attack
- Importer eligibility to participate in the Importer Self-Assessment Program (ISA)
- Priority consideration at CBP's industry-focused Centers of Excellence and Expertise

## C-TPAT Challenges

- **Difficult to measure**  
**Costs incurred to improve physical security & security personnel**
- **Costs incurred to improve IT systems & database development**
- **Time/Personnel required to update portal and stay compliant**
- **Preferential treatment in a port strike/natural disaster**
- **Few containers are being inspected-lack of funding/manpower**
- **Mislabeled cargo/Insufficient information on cargo manifests**
- **Extensive security profile requirements**
- **Membership may actually increase the threat to member's supply chain**





# GLOBAL PRECISION INDUSTRIES

**Thank you!**  
[www.globalprec.com](http://www.globalprec.com)