



Irish International  
Freight Association

[www.iifa.ie](http://www.iifa.ie)

Life After Brexit

11<sup>th</sup> May



## BREXIT – CUSTOMS DECLARATIONS

DECLARATIONS  
FROM 1.6M TO 20M

13 X

TRANSITS  
FROM 40K TO 4M

100 X

S&S  
100K TO 25M

250 X

Source: Revenue CCC Meeting – prior to UK declaring they would not seek S&S for initial period



Irish International  
Freight Association

# RO/RO VOLUMES

[WWW.IIFA.IE](http://WWW.IIFA.IE)

RO/RO UNITS	2019	ACCOMP.	UNACCOM
Cork	3361	2844	717
Dublin	1,031,897	355,359	676,538
Rosslare	128,414	65,704	62,710
Belfast	548,035	183,922	364,113
Larne	200,394	130,092	70,302
Warrenpoint	101,472	7,870	93,602
<b>Total ROI</b>	<b>1,163,872</b>	<b>423,907</b>	<b>739,965</b>
<b>Total NI</b>	<b>849,901</b>	<b>321,884</b>	<b>528,017</b>
<b>Total IRL</b>	<b>2,013,773</b>	<b>745,791</b>	<b>1,267,982</b>





## **Dublin Port**

**24%+ of land mass re-allocated to cope with BREXIT requirements**

**Container depots have been pushed outside the port**

**Dwell times in the ports have been shortened and charges increased.**

**+30 million invested in Dublin Port development**



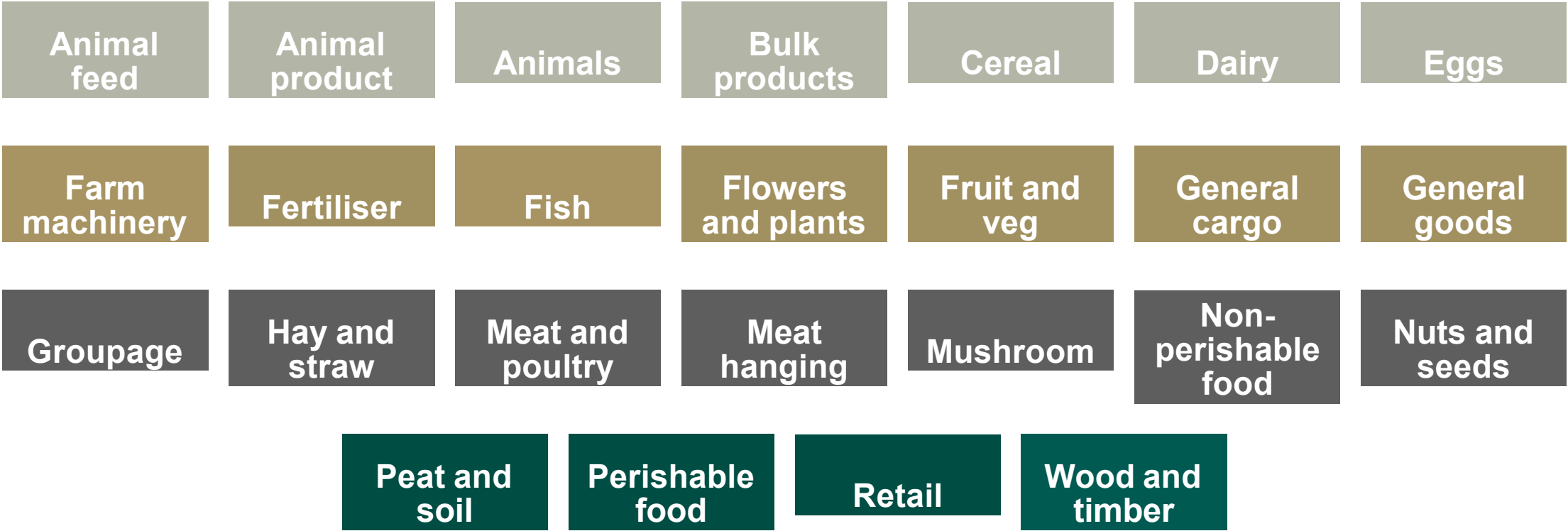


TOLKA QUAY

1,394.79 m



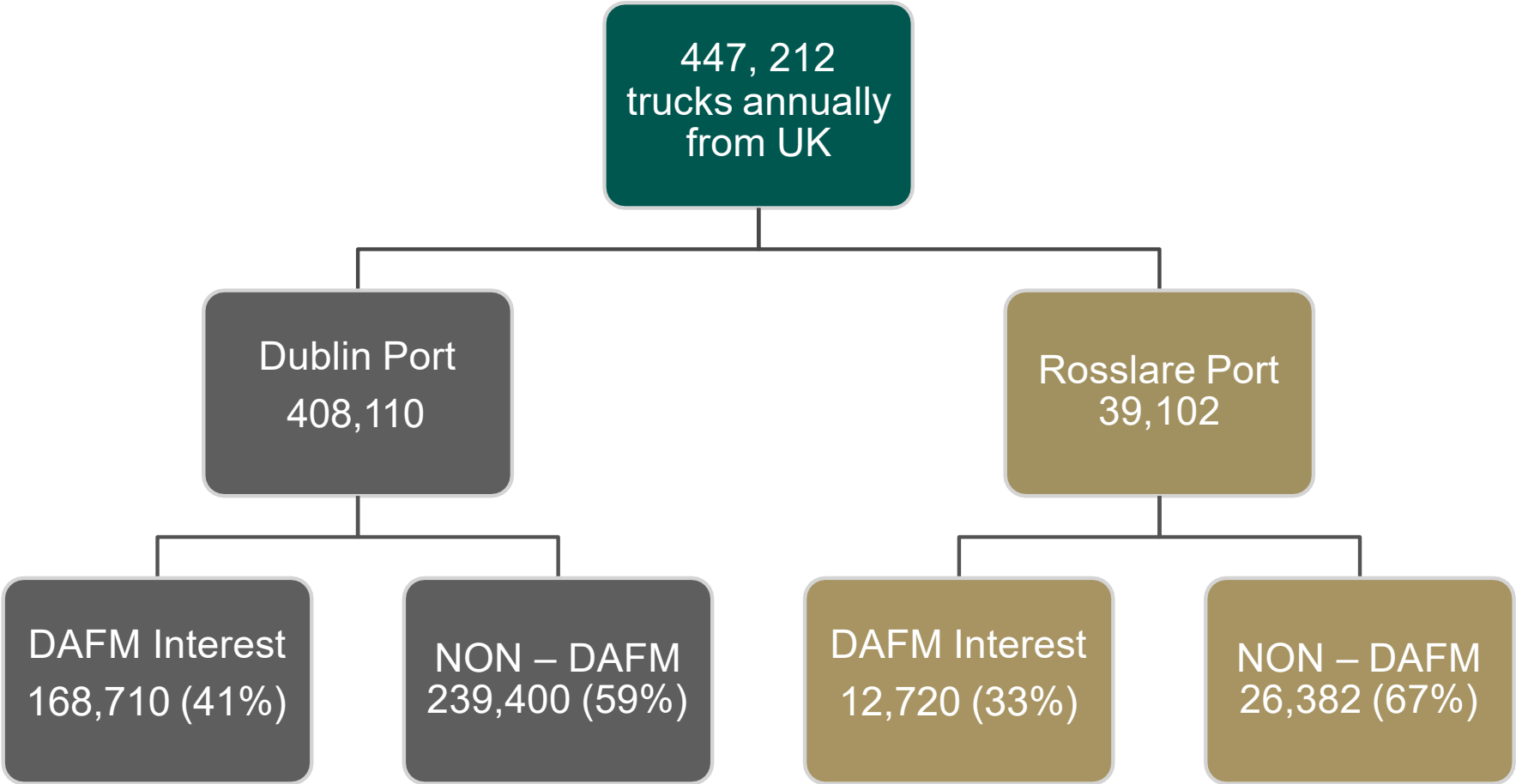
# UK RORO Manifest Analysis- 1844 unique descriptions for freight units assigned into 25 categories





# Summary of One Years\* RORO Manifest Data from UK

RoRO data from ship's manifests between 23/02/2019 and 25/02/2020 leading to trucks of **potential** interest to DAFM.



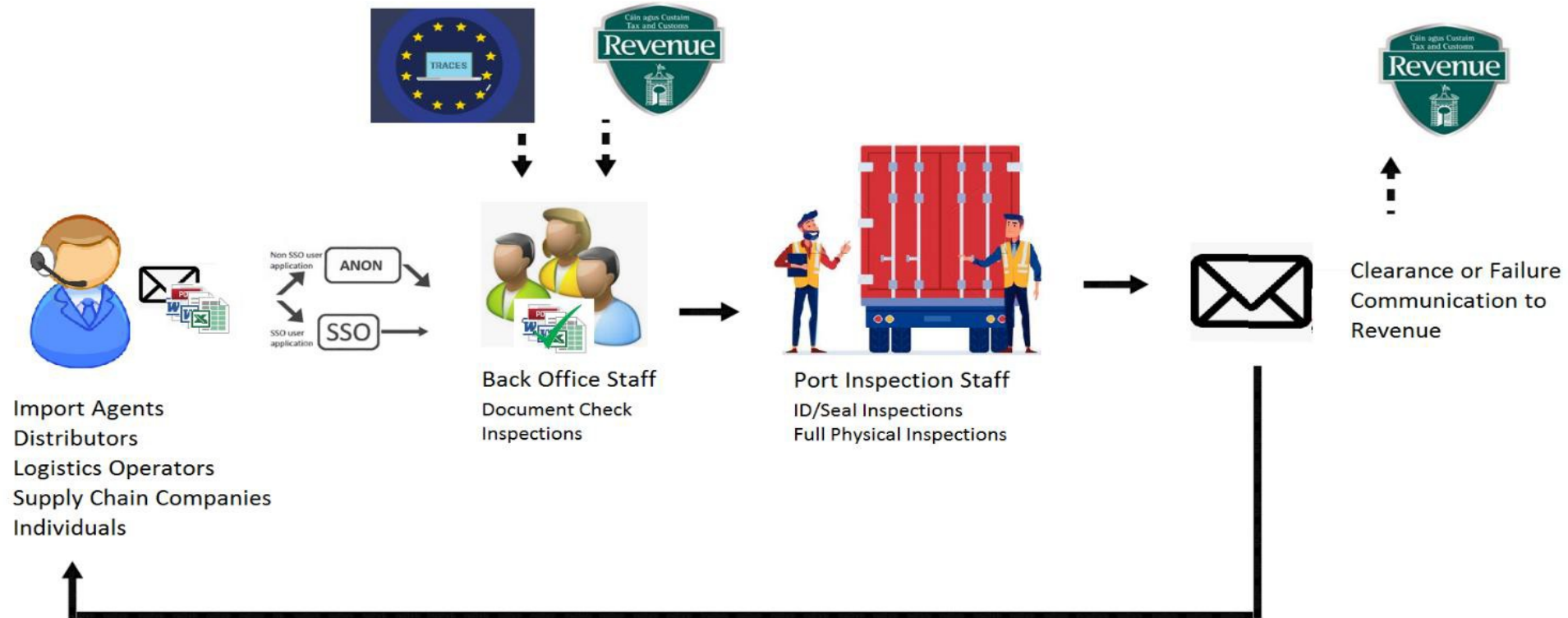


8  
A  
n  
R  
o  
i  
n  
n  
T  
a  
l  
m  
h  
a  
i  
o  
c  
h  
t  
a  
,  
B  
i  
a  
a  
g  
u  
s  
M  
a  
r  
a  
|  
D  
e  
p  
a  
r  
t  
m  
e  
n  
t  
o  
f  
A  
g  
r  
i

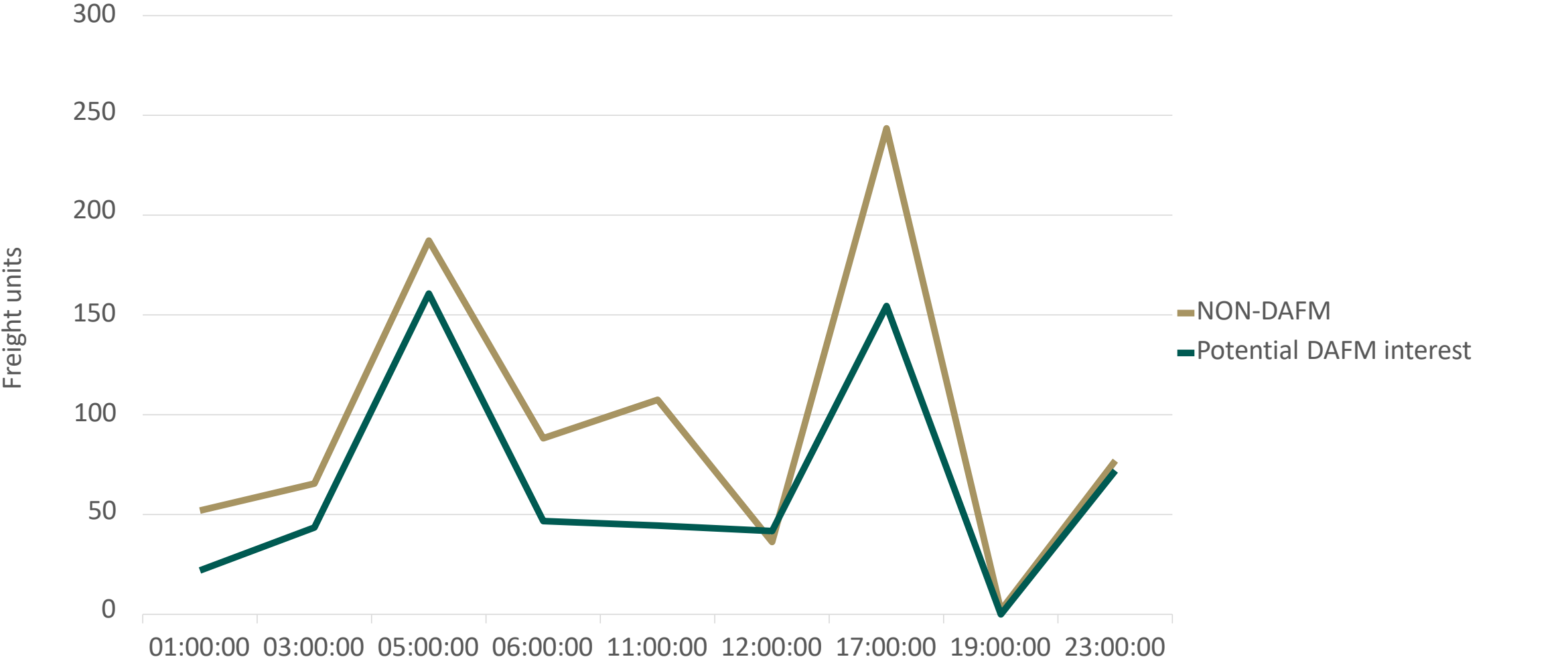


# Import Notification Process

## 24 HOUR PRE ALERT

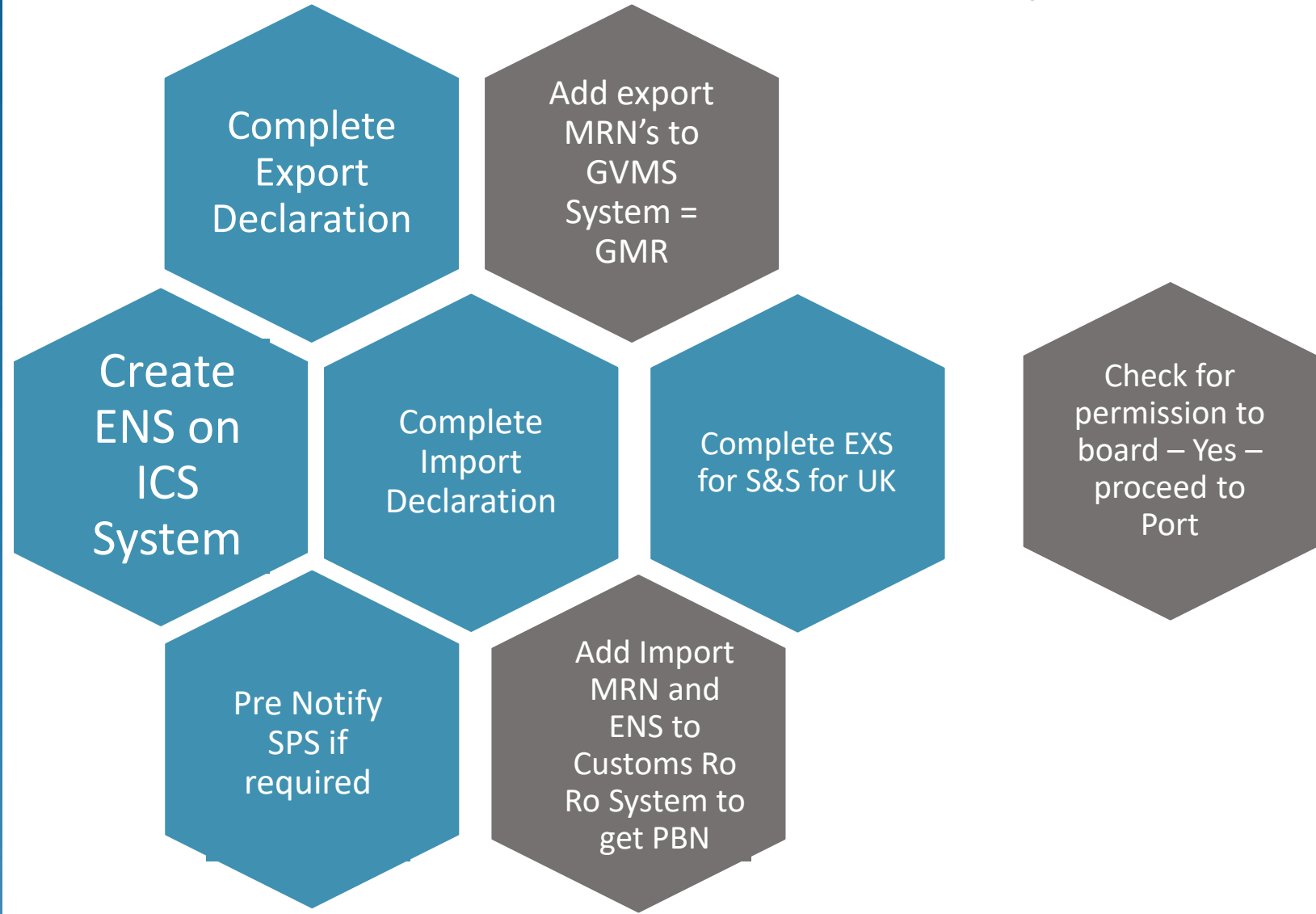


Data from ship's manifests on Thursday 11/07/2019  
Total number of DAFM interest freight units over this day = 586





# New Processes Pre Departure



# New Processes On Arrival



Green  
Leave Port

Check for  
Routing  
Green/Red

Red –  
Proceed for  
inspection if  
required

Declarant  
Check  
routing and  
provide  
backup as  
required

Follow  
signage to  
examination  
/inspection  
area

Wait for  
inspection or  
examination





# What changes can we expect?



01

## OVERNIGHT SERVICE EX UK

Documentation will be crucial to allow for the various declarations to be made.

## INCREASE IN COSTS EX UK

The requirement for customs procedures and S&S declarations will mean higher costs per CONSIGNMENT. Can effect shipment size/low value consignments

02





## LANDBRIDGE

Serious concerns over  
'efficiency' of landbridge  
and delay's accessing ports

03

## 24 Hour NOTIFICATION TO DAFM

EU regulations requires a 24 hour pre  
notification to DAFM of SPS goods

04



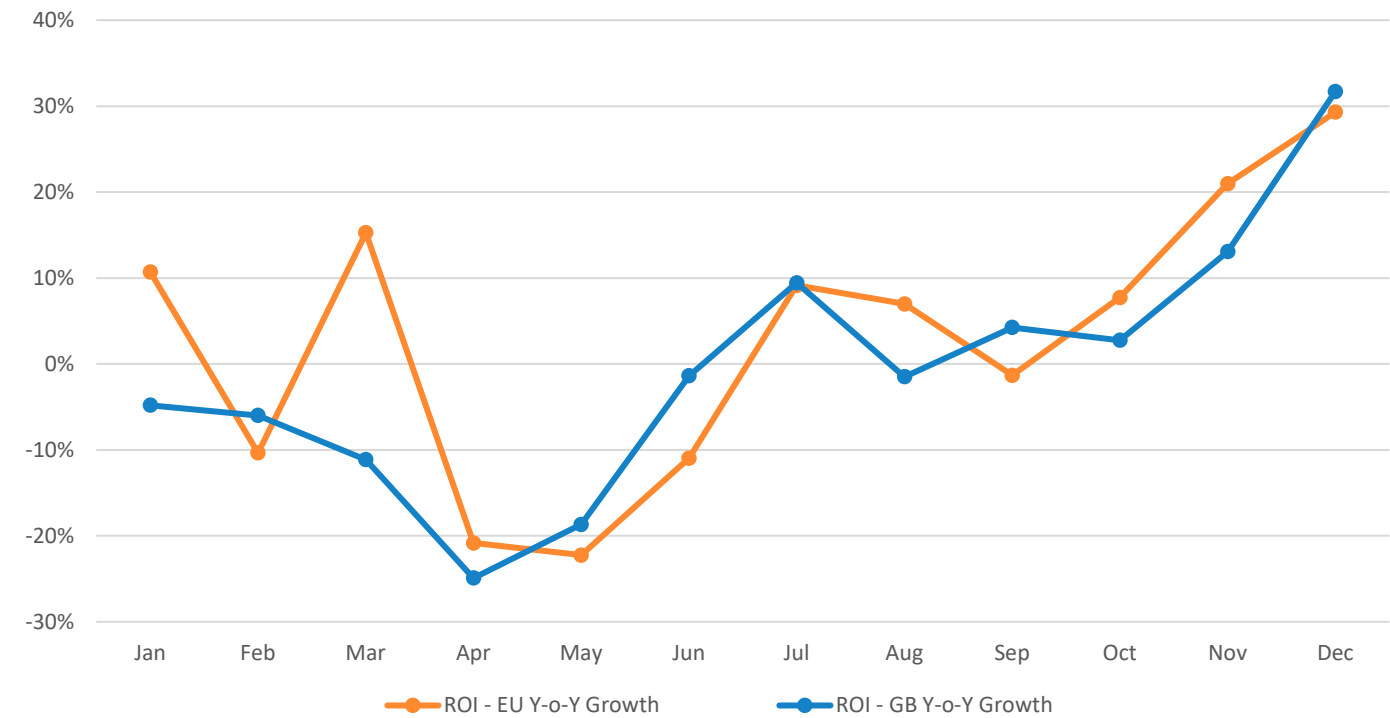


### 3. Stockpile & Trial

ROI - EU	2019	2020	Growth (%)	Diff
Q1	48,989	51,612	5%	2,623
Q2	54,319	44,493	-18%	- 9,826
Q3	50,475	52,911	5%	2,436
Q4	50,669	60,123	19%	9,454

ROI - GB	2019	2020	Growth (%)	Diff
Q1	250,034	231,384	-7%	- 18,650
Q2	245,193	208,509	-15%	- 36,684
Q3	244,867	254,870	4%	10,003
Q4	242,221	276,911	14%	34,690

	2019	2020	Growth	Diff	2020 % Share
Dublin	178,260	182,162	2%	3,902	88%
Rosslare	20,623	25,450	23%	4,827	12%
Total	198,883	207,612	4%	8,729	



- GB & EU trade rises significantly towards end of 2020
- The GB increase was a pre-Brexit Stockpile
- The EU increase aligned with IMDO & DoT's ACT Now Campaign

# Confusion reigned!!





## LoLo Routes

BG Freight/Leaside Shipping  
Cork – Rotterdam

BG Freight  
Dublin – Antwerp  
Dublin – Rotterdam  
Waterford – Rotterdam

X-Press Containers/DSG  
Cork – Rotterdam  
Dublin – Antwerp  
Dublin – Rotterdam

Maersk  
Cork – Rotterdam  
Cork – Bremerhaven  
Dublin – Rotterdam

Samskip Multimodal  
Cork – Rotterdam  
Dublin – Rotterdam  
Waterford – Rotterdam

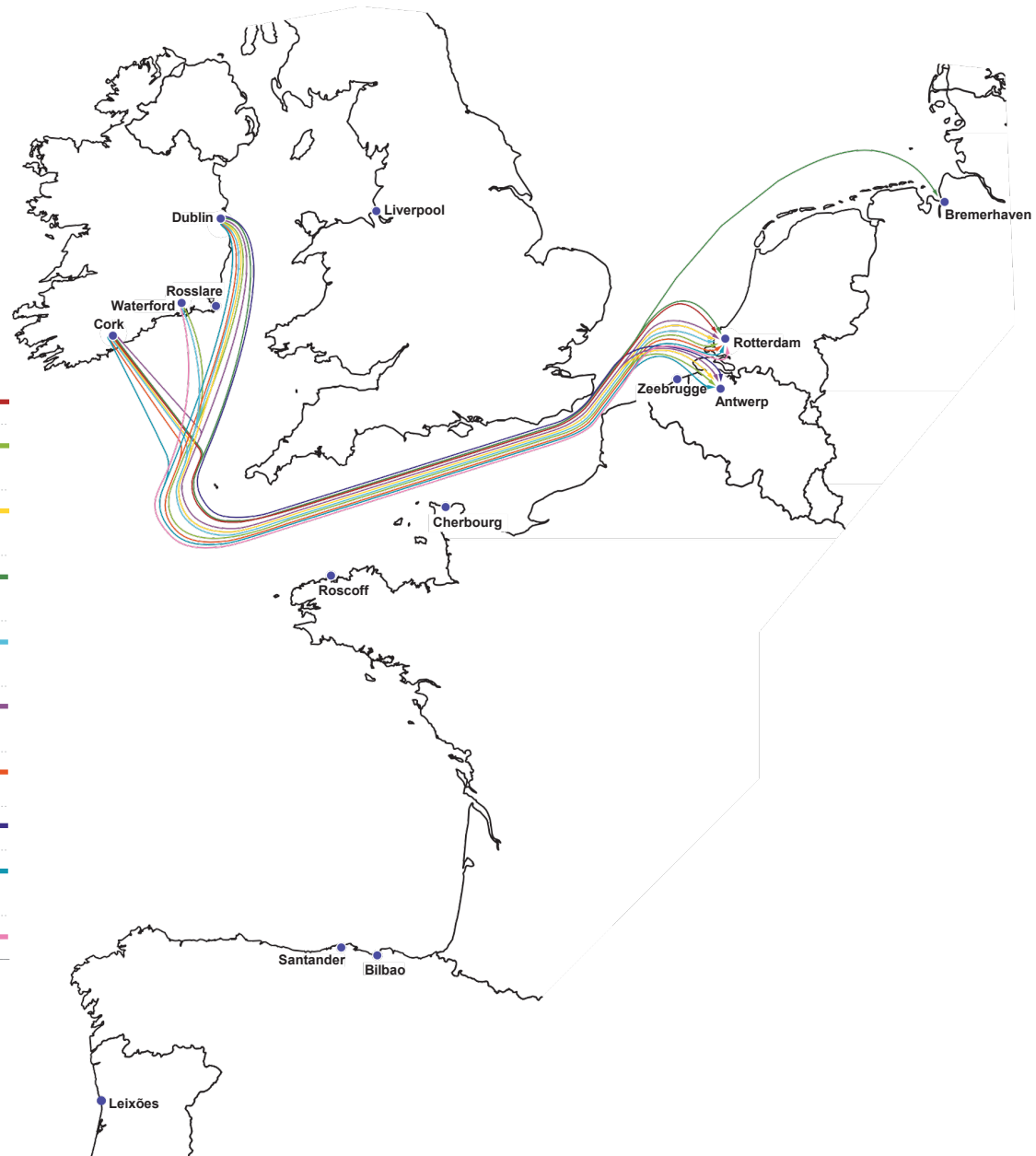
EUCON  
Cork – Antwerp  
Dublin – Antwerp  
Dublin – Rotterdam

CMA-CGM  
Cork – Rotterdam  
Dublin – Rotterdam

MSC  
Dublin – Antwerp

Evergreen Line  
Cork – Rotterdam  
Dublin – Antwerp  
Dublin – Rotterdam

DFDS  
Waterford – Rotterdam



## RoRo Routes

CLdN Ro Ro SA  
Cork – Zeebrugge  
Dublin (via Liverpool) – Santander  
Dublin (via Liverpool) – Leixões  
Dublin – Rotterdam  
Dublin – Zeebrugge

### Brittany Ferries

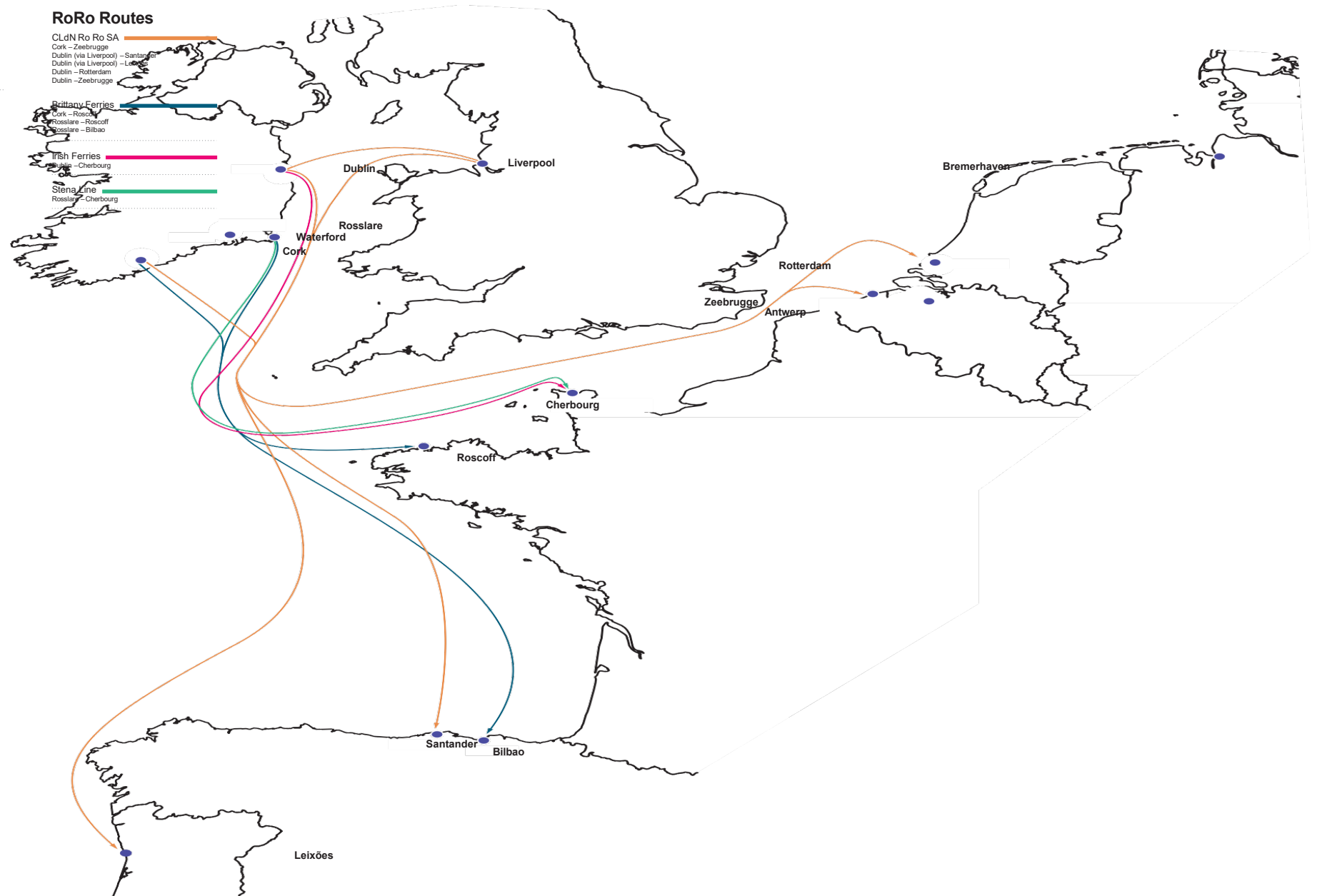
Cork – Roscoff  
Rosslare – Roscoff  
Rosslare – Bilbao

### Irish Ferries

Dublin – Cherbourg

### Stena Line

Rosslare – Cherbourg





# Customs Checklist



ROS



EORI Number



TAN



# Customs Checklist



Identify TARIC classification for your goods



Imports – Essential Suppliers invoice



Unambiguous description of goods







# Customs Checklist



**Break down on the invoice per TARIC code – Nett, Gross, Packages**



**Who will make the declarations on your behalf in Ireland**



**Who will make declarations in the UK for your supplier/customer**









# NI Protocol

SEPARATE FROM WITHDRAWAL AGREEMENT

ALLOWS FOR FREE CIRCULATION OF EU GOODS INTO NI AND  
VICE VERSA

SPS CHECKS ON GOODS EX GB

NEW EORI NUMBER WILL HAVE XI PREFIX

-









# Useful links....

Customs Brokers in Ireland [www.iifa.ie](http://www.iifa.ie)

Tariff classification:

[https://ec.europa.eu/taxation\\_customs/dds2/taric/taric\\_consultation.jsp?Lang=en](https://ec.europa.eu/taxation_customs/dds2/taric/taric_consultation.jsp?Lang=en)

Revenue Website Classification:

<https://www.revenue.ie/en/customs-traders-and-agents/importing-and-exporting/classification/index.aspx>

SPS GOODS – Department of Agriculture:

<https://www.agriculture.gov.ie/forests-service/brexit/>

Border Operating Model UK: <https://www.gov.uk/government/publications/border-operating-model>







Irish International  
Freight Association

[www.iifa.ie](http://www.iifa.ie)

**Thank You!!**

**11<sup>th</sup> May 2021**